

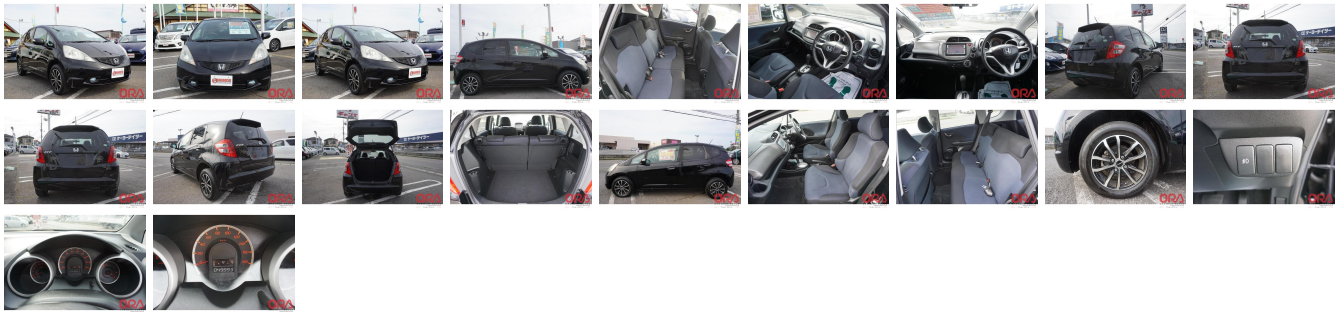
Vehicle Information

ORA 6109

HONDA

First Registration Year: 2010-08
 Manufacture Year: 2010-08

| | | | | | | |
|---------------------|--------|--------------------|-------------|-------------------------|-----------|------------------|
| Model: | FIT | Chassis No: | GE6-130**** | Transmission: | Automatic | Exterior: |
| Grade: | 4.0 | Engine: | | Mileage: | 50,000 | Interior: |
| Fuel: | Petrol | Seats: | 5 | Engine Capacity: | 1,300 | |
| Drive Train: | 2WD | | | Color: | BLACK | |



Vehicle Options:

| | | | |
|------------------|------------------------|----------------|--------------|
| Pwr Steering | Pwr Wind | Pwr Mirrors | Center Lock |
| Air Cond | Reverse Camera | Pwr Slide Door | Easy Closer |
| Cruise Control | ABS | Air Bag | Fog Lamps |
| HID Head Lamps | LED Head Lamps | Spare Key | Remote Key |
| Push Start | Seat Heater | Pwr Seat | Leather Seat |
| Floor Mat | Sun Roof | Alloy Wheels | Grill Guard |
| Rear Wiper | Rear Spoiler | Stereo | Navi/TV |
| Car CD | Car MD | AUX | Spare Tire |
| Spare Tire Case | Puncture Repairing Kit | Tool | Jack |
| Operators Manual | Maint. Record | | |

\$1,550